



Smart Transportation Alliance

2022 Annual Conference
& Innovation Awards

Smart Operation of Transportation Infrastructures

Ricardo Lobo



ALEATICA

29 November 2022



Smart Transportation Alliance

Current situation & challenges

1. Operations in Aleatica
2. Safety First
3. Sustainability
4. Service Excellence

A smart, safe, sustainable mobility company



We are an exclusive transport infrastructure operator, which means we can focus purely on the design and operation of highways and other mobility assets in Europe and Latin America.

Aleatica is fully owned by **IFM Global Infrastructure** Fund, which is managed by **IFM Investors**, a pioneer in infrastructure investment.

Our operation has a unique geographic footprint.



We anticipate transportation needs for the next 20 years.

We're working every day to improve quality of life for roadway passengers, employees, and the communities where we're present. We've developed technological projects for sustainable mobility and create alliances with organizations committed to caring for the environment.

 **353,337**
million vehicles travel on Aleatica roads each year.

 **3,000**
employees worldwide

€ **810 million**
euros in net sales in 2021

€ **114.6 million**
to be invested in the next 5 years in several projects focused on the safety of our employees, roadway passengers, and neighboring communities.

 **9** Urban highways
7 Interstate corridors
1,131.83 kilometers

 **2** Commercial ports
307,891 Annual Containers
47.3 hectares

 **1** Light Rail-Metro
6.8 million passengers annually

 **1** Airport
Potential capacity to transport **8** million passengers annually

* M6 toll: Asset in process of integration into Aleatica's portfolio

The pillars of Aleatica are widely communicated within the organization, and today they are a great source of inspiration for the entire team. The 5 strategic pillars of Aleatica are:

 <p>La seguridad es primero</p>	 <p>Sostenibilidad social y ambiental</p>	 <p>Excelencia en el servicio</p>	 <p>Integridad corporativa</p>	 <p>Pasión por el equipo</p>
<p>We take care of the safety of each client, each employee and each person. This is always our priority.</p>	<p>We believe that a healthy environment and an inclusive society are The basics for a viable development</p>	<p>We improve every day, listening and assessing the needs of Our users,</p>	<p>We act with transparency and always do the right thing. We follow the highest standards of corporate governance</p>	<p>We promote a culture of respect, responsibility and collaboration. Our world-class team makes it all possible.</p>

We focus on the first 3 pillars we are facing in our operation; the last two pillars are internal gears that make machinery works with precision



Through our actions we create safe ways

Smart Transportation Alliance

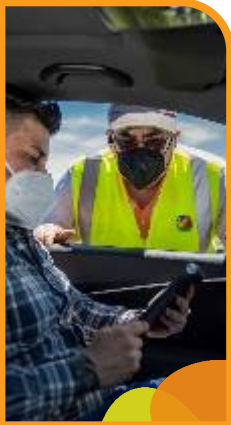
The first three pillars for the operation of our infrastructures are:



Safety First

In ALEATICA we implement Accident Reduction Programs (ARP).

We promote a culture of vehicle check-up and maintenance through vehicle inspection campaigns.



Sustainability

We strive to improve the quality of life and health conditions in our environment through the progressive low-carbon operation of our assets and the development of technological projects for sustainable mobility.



Excellence in service

Our reason for being our people, we owe it to them. We serve and take care of our users. We apply a systemic and innovative approach to provide a high added value service.





Safety Road

Our **Accident Reduction Program** is a multi-year plan to identify, implement and monitor actions to improve Road Safety. Objectives:

- Reducing crash severity
- Strategic decision making for security
- Prioritize investments
- Preventive management in road safety



Safety works

Latest technologies and trainings to improve safety on road operations:

- TMA Truck Mounted Attenuator
- Laser Fencing
- Anti-sleep devices...



INNOVA Safety

We try to get ahead by looking for innovative solutions for collaborators and users:

- ELASTIC intelligent barriers presented together with other partners of the STA
- Fog episode management system
- High-tech individual protection systems
- We use gamification to educate and raise awareness.



TO REDUCE GHG EMISSIONS AND INCREASE ENERGY EFFICIENCY



SGC

Carbon Management System:

- methodology for a culture of decarbonization
- actions implemented to reduce emissions
- necessary **changes in the day to day**

Mitigation measures

Strategy to support the establishment of emission reduction targets. Report scope 1 and 2 emissions, goal by **40% reduction in 2030 and reaching Net Zero by 2050**:

- Electronic toll collection systems
- Traffic control systems
- Small scale biodigester
- Water treatment...

ClimateChange Adaptation

We try to strengthen Aleatica's infrastructures to protect them from the effects of climate change, through adaptation programs:

- **Disaster recovery and risk management**
- Climate awareness and capacity enhancement
- Local and **regional resilience**

INNOVATION AT SERVICE OF OUR USERS.



BIG DATA

Processing and analysis of massive data sets on positioning and mobility.

The platform has 4 types of projects:

- Origen/Destination
- Infrastructure Analysis
- Speed analysis
- Operation analysis



REAL TIME

- Connected roads
- Real-time user information
- Travel Alternatives
- Remote payment methods



ALERTS

Systems Alert in Control Centers to deal more efficiently with incidents.

We provide our teams with complementary information.

Preventive analysis



ITS

Online monitoring of our infrastructure.

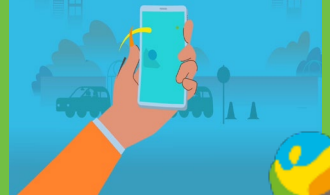
We create a direct channel with our users to improve the integral security of our users.

Technology as a driver of our actions.

Skill
Amazon
Alexa



APP ALEATICA





Smart Transportation Alliance

**THANK YOU
FOR YOUR
ATTENTION**

Tribes European Quarter
Avenue Marnix 17
1000 Brussels (Belgium)
Tel: + 32 2 808 60 50

Email: info@smart-transportation.org

www.smart-transportation.org